

## GOAL 2: INTERNATIONAL IMMIGRATION

New Brunswick will receive a percentage of international immigrants equal to its national population share (~2.10%).

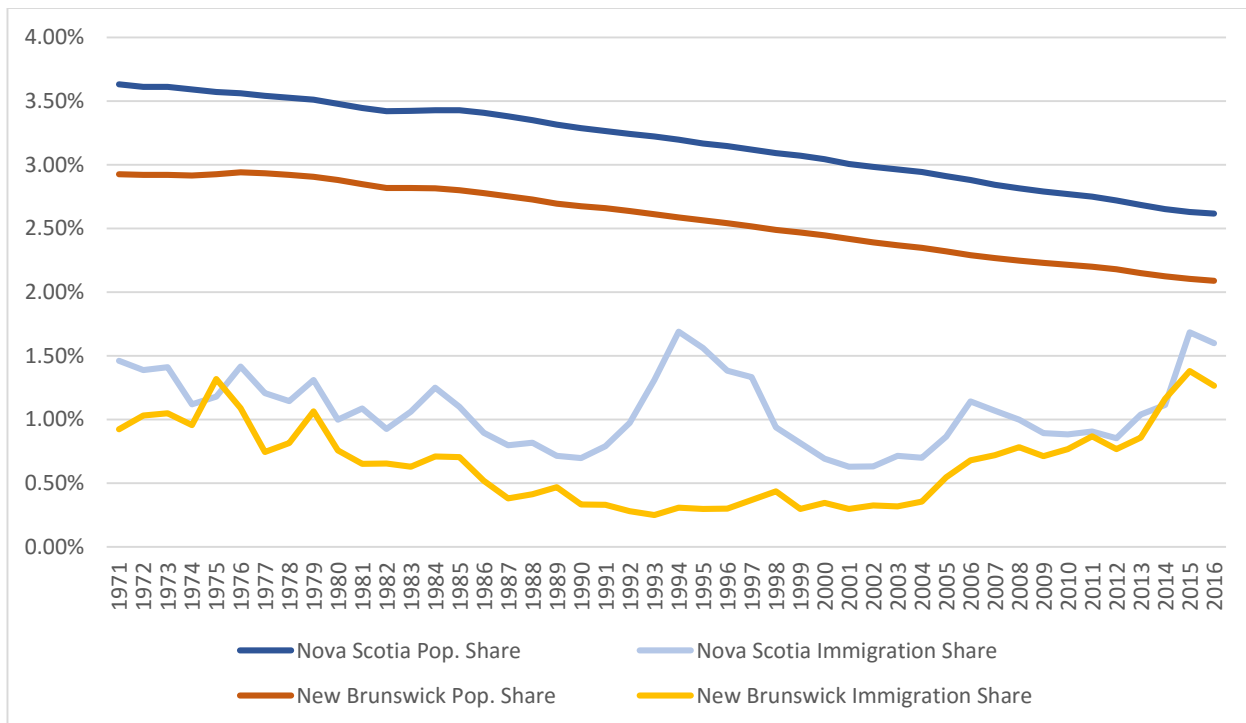
Status: **PROGRESSING**

### Current Situation

As was mentioned in Goal 1, New Brunswick should consider stimulating economic growth by increasing its population size. This could be accomplished not only by promoting interprovincial migration (see Goal 1), but also by receiving a larger proportion of the country's international immigrants. If New Brunswick adopts the same strategy outlined by *OneNS* for Nova Scotia, it will aim to receive a percentage of international immigrants equal to its share of the national population. Because New Brunswick contains 2.10% of the population of Canada, its goal would consist of receiving 2.10% of the country's incoming international immigrants.

Between 2014 and 2016, New Brunswick experienced its highest annual immigration share on record: during this time, its percentage of Canada's international immigrants grew from ~0.80% to ~1.30%. In 2015, immigration reached an all-time high for the province, with 4,458 international arrivals—2,439 more than in 2012. As *OneNS* suggests, these elevated numbers reflect the large influx of Syrian refugees coming throughout Canada; nonetheless, the percentage of immigrants settling in New Brunswick has been steadily increasing since the early 2000s, with numbers growing even more rapidly in recent years. Although immigration levels decreased slightly after 2015, the numbers for 2016 are still historically high.

**Figure 1: Population and Immigration Share, by Province**



<b>Data: Figure 1</b>	<b>NS Pop. Share</b>	<b>NB Pop. Share</b>	<b>NS Immi. Share</b>	<b>NB Immi. Share</b>
1971	3.63%	2.93%	1.46%	0.92%
1972	3.61%	2.92%	1.39%	1.03%
1973	3.61%	2.92%	1.41%	1.05%
1974	3.59%	2.91%	1.12%	0.95%
1975	3.57%	2.93%	1.18%	1.32%
1976	3.56%	2.94%	1.42%	1.09%
1977	3.54%	2.93%	1.21%	0.74%
1978	3.52%	2.92%	1.14%	0.82%
1979	3.51%	2.91%	1.31%	1.06%
1980	3.48%	2.88%	1.00%	0.76%
1981	3.44%	2.85%	1.09%	0.65%
1982	3.42%	2.82%	0.92%	0.65%
1983	3.42%	2.82%	1.06%	0.63%
1984	3.43%	2.81%	1.25%	0.71%
1985	3.43%	2.80%	1.10%	0.70%
1986	3.41%	2.78%	0.89%	0.52%
1987	3.38%	2.75%	0.80%	0.38%
1988	3.35%	2.73%	0.82%	0.41%
1989	3.31%	2.70%	0.71%	0.47%
1990	3.29%	2.67%	0.70%	0.33%
1991	3.26%	2.66%	0.79%	0.33%
1992	3.24%	2.64%	0.97%	0.28%
1993	3.22%	2.61%	1.31%	0.25%
1994	3.20%	2.59%	1.69%	0.31%
1995	3.17%	2.56%	1.56%	0.30%
1996	3.15%	2.54%	1.38%	0.30%
1997	3.12%	2.52%	1.33%	0.37%
1998	3.09%	2.49%	0.94%	0.43%
1999	3.07%	2.47%	0.81%	0.30%
2000	3.04%	2.45%	0.69%	0.35%
2001	3.01%	2.42%	0.63%	0.30%
2002	2.98%	2.39%	0.63%	0.32%
2003	2.96%	2.37%	0.71%	0.32%
2004	2.94%	2.35%	0.70%	0.35%
2005	2.91%	2.32%	0.86%	0.54%
2006	2.88%	2.29%	1.14%	0.68%
2007	2.84%	2.27%	1.07%	0.72%
2008	2.81%	2.25%	1.00%	0.78%
2009	2.79%	2.23%	0.89%	0.71%
2010	2.77%	2.21%	0.88%	0.77%
2011	2.75%	2.20%	0.91%	0.87%
2012	2.72%	2.18%	0.85%	0.77%
2013	2.68%	2.15%	1.04%	0.86%
2014	2.65%	2.12%	1.11%	1.16%
2015	2.63%	2.10%	1.68%	1.38%
2016	2.62%	2.09%	1.60%	1.26%

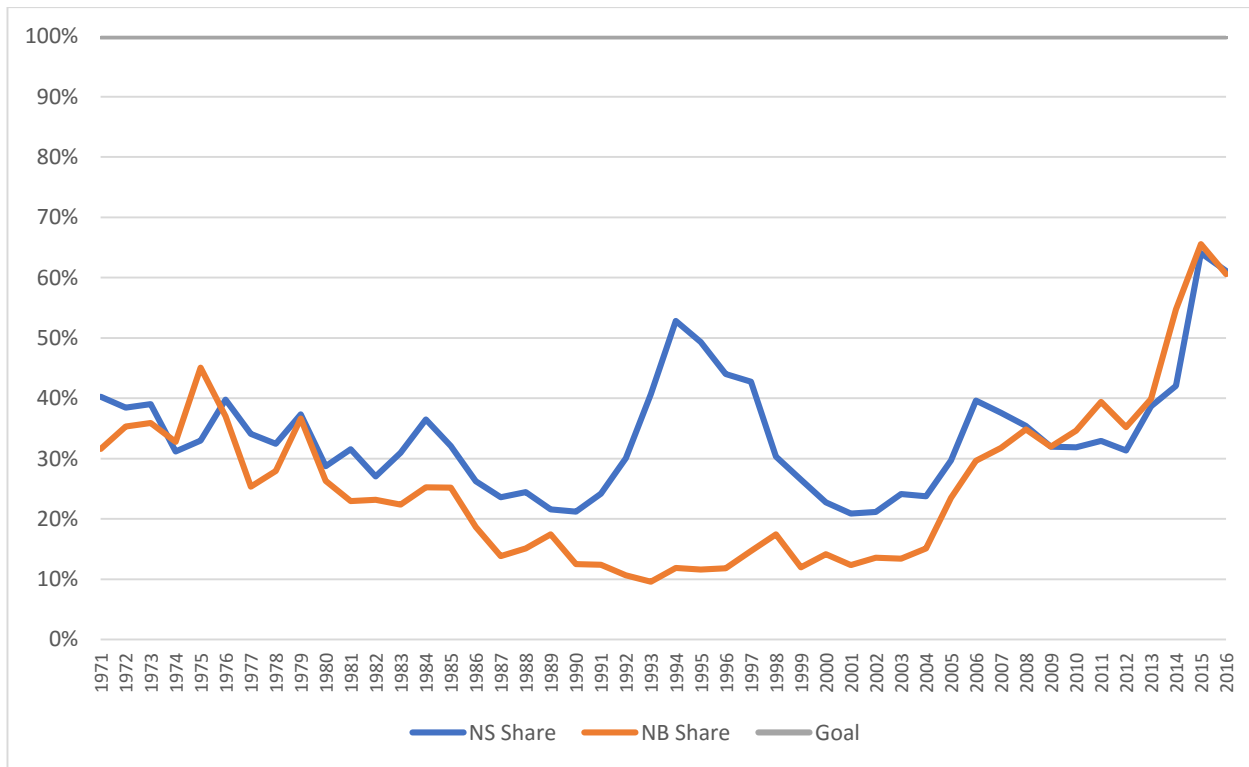
Source: Statistics Canada, CANSIM Table 051-0004: Components of population growth, Canada, provinces and territories, annual (persons) (1); Statistics Canada, CANSIM Table 051-0005: Estimates of population, Canada, provinces and territories, quarterly (persons) (1,2,3,6)

## What This Means

Since the early 2000s, New Brunswick has been experiencing a positive trend in the number of international immigrants it receives. This suggests that the province will continue to receive an increasing portion of Canada's immigrants. However, it is difficult to determine the rate at which migration to New Brunswick may continue to increase, as recent years have seen significant fluctuation in levels of growth and, most recently, a slight decline.

Furthermore, the province's immigration share is still disproportionately lower than its population share. In 2016, New Brunswick received only 1.26% of the immigrant population arriving in Canada, whereas the province had a population share of 2.09%. Thus, even with increasing numbers of immigrants coming to New Brunswick, the province still only achieved 60.55% of the suggested goal that year (see Figure 2).

**Figure 2: Percentage of Goal Achieved: Share of Immigrants to Share of National Population**



Data: Figure 2	NS Proportion of Immigrants Received	NB Proportion of Immigrants Received
1971	40.22%	31.57%
1972	38.45%	35.30%
1973	39.01%	35.89%
1974	31.17%	32.76%
1975	33.00%	45.06%
1976	39.76%	37.02%
1977	34.10%	25.36%

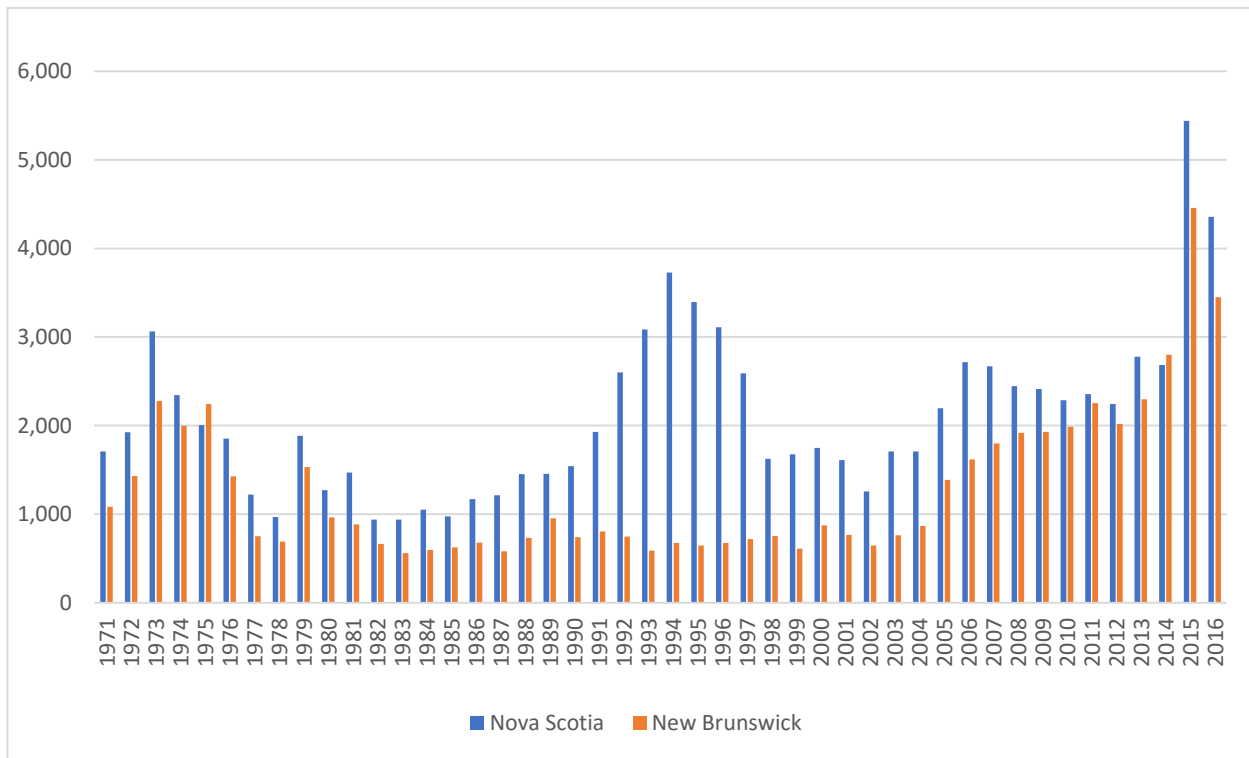
1978	32.46%	27.93%
1979	37.34%	36.61%
1980	28.72%	26.27%
1981	31.54%	22.92%
1982	27.02%	23.18%
1983	30.96%	22.35%
1984	36.48%	25.24%
1985	32.05%	25.19%
1986	26.24%	18.65%
1987	23.57%	13.85%
1988	24.41%	15.12%
1989	21.58%	17.41%
1990	21.18%	12.47%
1991	24.17%	12.38%
1992	30.05%	10.63%
1993	40.68%	9.59%
1994	52.81%	11.84%
1995	49.31%	11.59%
1996	43.99%	11.78%
1997	42.72%	14.65%
1998	30.34%	17.45%
1999	26.49%	11.99%
2000	22.73%	14.15%
2001	20.88%	12.34%
2002	21.16%	13.55%
2003	24.09%	13.42%
2004	23.74%	15.07%
2005	29.69%	23.48%
2006	39.60%	29.64%
2007	37.59%	31.76%
2008	35.42%	34.81%
2009	31.97%	31.95%
2010	31.86%	34.61%
2011	32.92%	39.41%
2012	31.35%	35.23%
2013	38.67%	39.90%
2014	42.05%	54.72%
2015	64.09%	65.56%
2016	61.07%	60.55%

Source: Statistics Canada, CANSIM Table 051-0004: Components of population growth, Canada, provinces and territories, annual (persons) (1); Statistics Canada, CANSIM Table 051-0005: Estimates of population, Canada, provinces and territories, quarterly (persons) (1,2,3,6)

## **DEEP DIVE**

From 2005 to 2016, New Brunswick's immigration numbers increased, and they reached their highest point of the 1971-2016 study period in 2015. However, from 1990 to 2004, New Brunswick also experienced its lowest immigration levels in 40 years, whereas Nova Scotia saw substantially higher numbers.

**Figure 3: Number of Migrants Settling Annually**



<b>Data: Figure 3</b>	<b>NS</b>	<b>NB</b>
<b>1971</b>	1,709	1,081
<b>1972</b>	1,923	1,428
<b>1973</b>	3,064	2,279
<b>1974</b>	2,342	1,998
<b>1975</b>	2,004	2,241
<b>1976</b>	1,854	1,425
<b>1977</b>	1,219	751
<b>1978</b>	967	689
<b>1979</b>	1,885	1,530
<b>1980</b>	1,271	963
<b>1981</b>	1,470	883
<b>1982</b>	937	662
<b>1983</b>	939	558
<b>1984</b>	1,049	596
<b>1985</b>	974	625
<b>1986</b>	1,170	678
<b>1987</b>	1,212	580
<b>1988</b>	1,452	732

1989	1,454	954
1990	1,542	738
1991	1,927	804
1992	2,599	748
1993	3,084	589
1994	3,726	676
1995	3,397	646
1996	3,111	673
1997	2,590	717
1998	1,624	752
1999	1,674	609
2000	1,747	874
2001	1,609	765
2002	1,257	645
2003	1,707	760
2004	1,708	865
2005	2,197	1,386
2006	2,715	1,616
2007	2,668	1,797
2008	2,446	1,918
2009	2,413	1,928
2010	2,287	1,986
2011	2,355	2,255
2012	2,243	2,019
2013	2,779	2,298
2014	2,685	2,799
2015	5,442	4,458
2016	4,356	3,448

Source: Statistics Canada, CANSIM Table 051-0004: Components of population growth, Canada, provinces and territories, annual (persons) (1)

### Sources

- *OneNS.ca*
- Statistics Canada
  - CANSIM Table 051-0004: Components of population growth, Canada, provinces and territories, annual (persons) (1)
  - CANSIM Table 051-0005: Estimates of population, Canada, provinces and territories, quarterly (persons) (1,2,3,6)